

# WOOD / STONE

FRONT DOORS

DOORS®





# WOOD / STONE

## FRONT DOORS

Doors are part of life. Having a door means having a home, having security, a space we belong to. We associate doors with the natural need for order and space division. In the past, they were often made of solid, untreated wood, while modern doors today are minimalist and clean-lined.

Architecture and living styles are constantly evolving, and our homes are continuously adapting to the latest innovations. In terms of materials, modern doors offer a variety of options, from classic wood to robust stone and innovative composite materials.

Many people strive for uniqueness and individuality, and you could be one of them. So why not discover your new favorite door now?



# As unique as you!

Stone is an excellent material that can be perfectly combined with wood to create a unique and appealing door. This combination of stone and wood can be used in both traditional and modern designs and gives your door a touch of luxury and exclusivity.

If you are looking for a unique and individual solution, consider tailor-made options. From planning to implementation, you can realize your ideas and design a door that is not only functional, but also reflects your personality and style.

A modern home starts at the front door. With DOORS' intelligent entrance systems, you not only create a stylish first impression, but also an oasis of well-being that combines comfort, security and energy efficiency.

Thanks to excellent thermal and sound insulation as well as smart unlocking systems, your home can be perfectly integrated into existing smart home solutions.

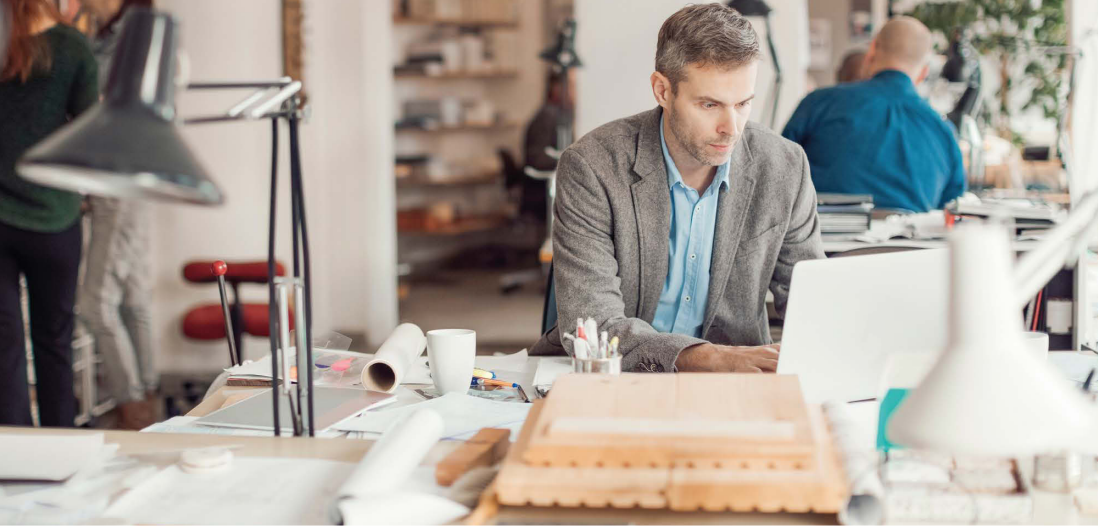
It has never been so easy to combine elegance and functionality in an entrance solution and thus create a place of peace, harmony and comfort.











## PERSONALIZATION

We manufacture custom-made doors to suit our customers' needs, both in terms of design and functionality. We take the time to understand your requirements and provide you with tailor-made solutions that perfectly fit your needs.



## TECHNOLOGY

Our products are equipped with the latest technology and the best components available. We attach great importance to the highest quality in workmanship to ensure smooth opening and closing of the doors, no matter how heavy the door leaf is. In addition, we offer a variety of additional functions and options to best meet the needs of our customers.



## DESIGN

Our designs are the result of inspiring journeys to the most remote corners of the world. We use exclusive finishing details to offer all the beauty that Mother Earth and the hands of talented artisans have given us. Every detail tells a story and connects you to the fascinating places we have traveled to. Experience the magic of the faraway in every piece of our collection.



## MATERIAL AND ENVIRONMENTAL PROTECTION

We use innovative methods to harmoniously combine a variety of natural materials such as wood, stone and metal and to create an overall concept. Our strong environmental awareness and our responsibility towards future generations are reflected in various aspects. These include the efficient use of raw materials, environmentally friendly manufacturing techniques and the development of products that reduce the energy consumption of the end users of our doors.



## CREATIVE POSSIBILITIES

Width of single-leaf door up to 1350 mm / height of single-leaf door up to 3000 mm. Each construction can be additionally enlarged with fixed or glazed side and/or top parts. Opening inwards or outwards. With the help of modern technology, we can produce a special door leaf, the surface of which we can refine with various materials from all over the world.









**HS901**  
 Door leaf outside: Royal 01  
 Frame outside: Royal 01  
 Pull handle: GM180 matt brass  
 Rosette outside: MZAR matt brass



**HS901**  
 Door leaf outside: Royal 03  
 Frame outside: Royal 03  
 Handle: VK200 black with LED  
 Rosette outside: SZAR black



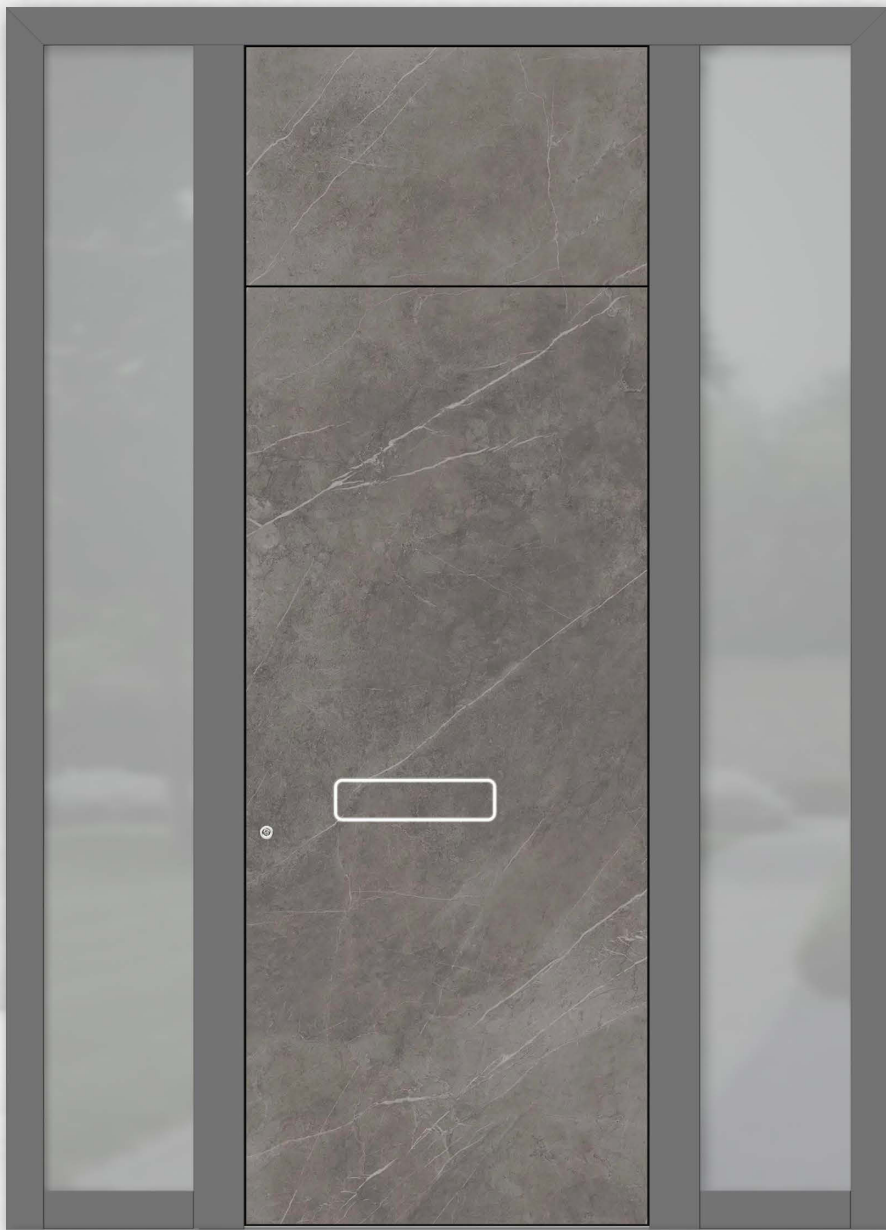
**HS901**  
 Door leaf outside: Royal 04  
 Frame outside: Royal 04  
 Pull handle: GB180 bronze matt  
 Rosette outside: BZA bronze matt





**HS901 view from the inside**  
 Door leaf inside: knotty oak, oiled  
 Frame inside: knotty oak, oiled  
 Handle inside: S609 black  
 Other: mirror 300 mm





#### HS901 view from the inside

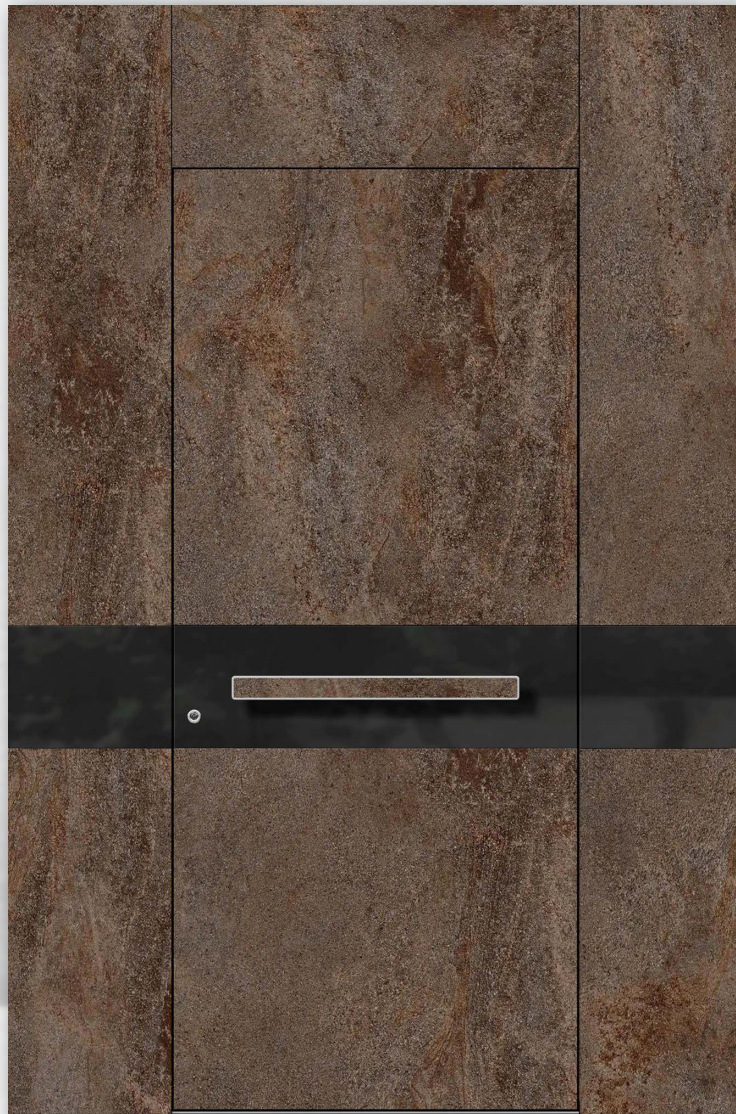
Door leaf inside: knotty oak, grey oiled  
 Frame inside: knotty oak, grey oiled  
 Handle inside: S609 black  
 Door leaf with top panel extension

#### HS901

Door leaf outside: Royal 02  
 Frame outside: aluminum RAL9007 FS  
 Handle: SAG40 SmartActive with LED, horizontal  
 Rosette outside: ZAR stainless steel  
 Side panel: ST04  
 Side panel glass: satinato white  
 Door leaf with top panel extension







#### **HS951**

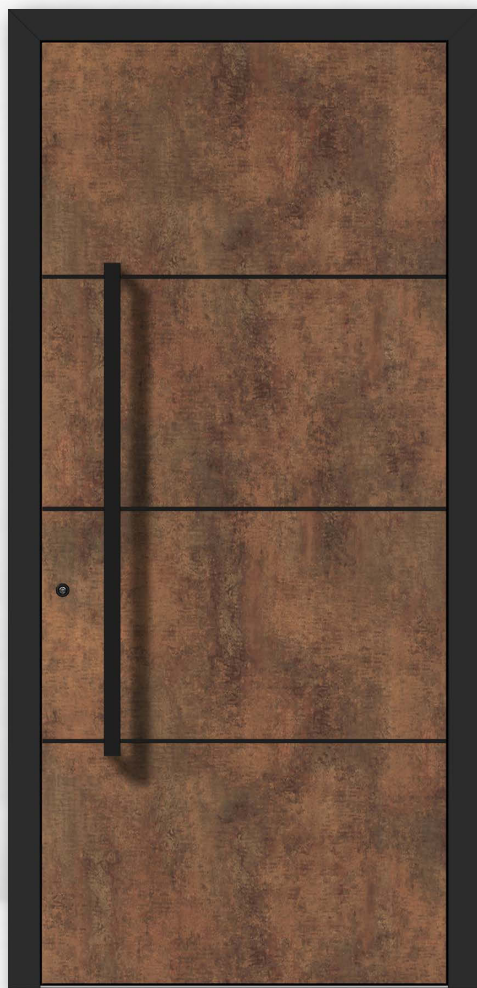
Door leaf outside: Royal 05  
 Decor outside: black enamel glass  
 Frame and extensions outside: Royal 05  
 Pull handle: GVE70K stainless steel with Royal 05  
 Rosette outside: ZAR stainless steel



#### **HS905**

Door leaf outside: Royal 06  
 Frame and extension outside: Royal 06  
 Pull handle: GQ180 stainless steel  
 Rosette outside: ZAR stainless steel  
 Glass: parsol grey





#### **HS902E**

Door leaf outside: Elite 0794  
 Frame outside: Alu RAL9005 FS  
 Pull handle: GFRS120 black  
 Rosette outside: SZAR black



#### **HS955**

Door leaf outside: Elite 0898  
 Frame outside: Elite 0898  
 Glass: parsol grey with black enamel  
 Pull handle: GVB80G black with enamel glass  
 Rosette outside: SZAR black



#### **HS904**

Door leaf outside: Elite 0799  
 Frame outside: Elite 0799  
 Glass: satinato white  
 Pull handle: GQ180 stainless steel  
 Rosette outside: ZAR stainless steel





**HS904 view from the inside**

Door leaf inside: RAL9016

Frame inside: RAL9016

Handle inside: GE508 stainless steel



**HS901**

Door leaf outside: Elite 0897

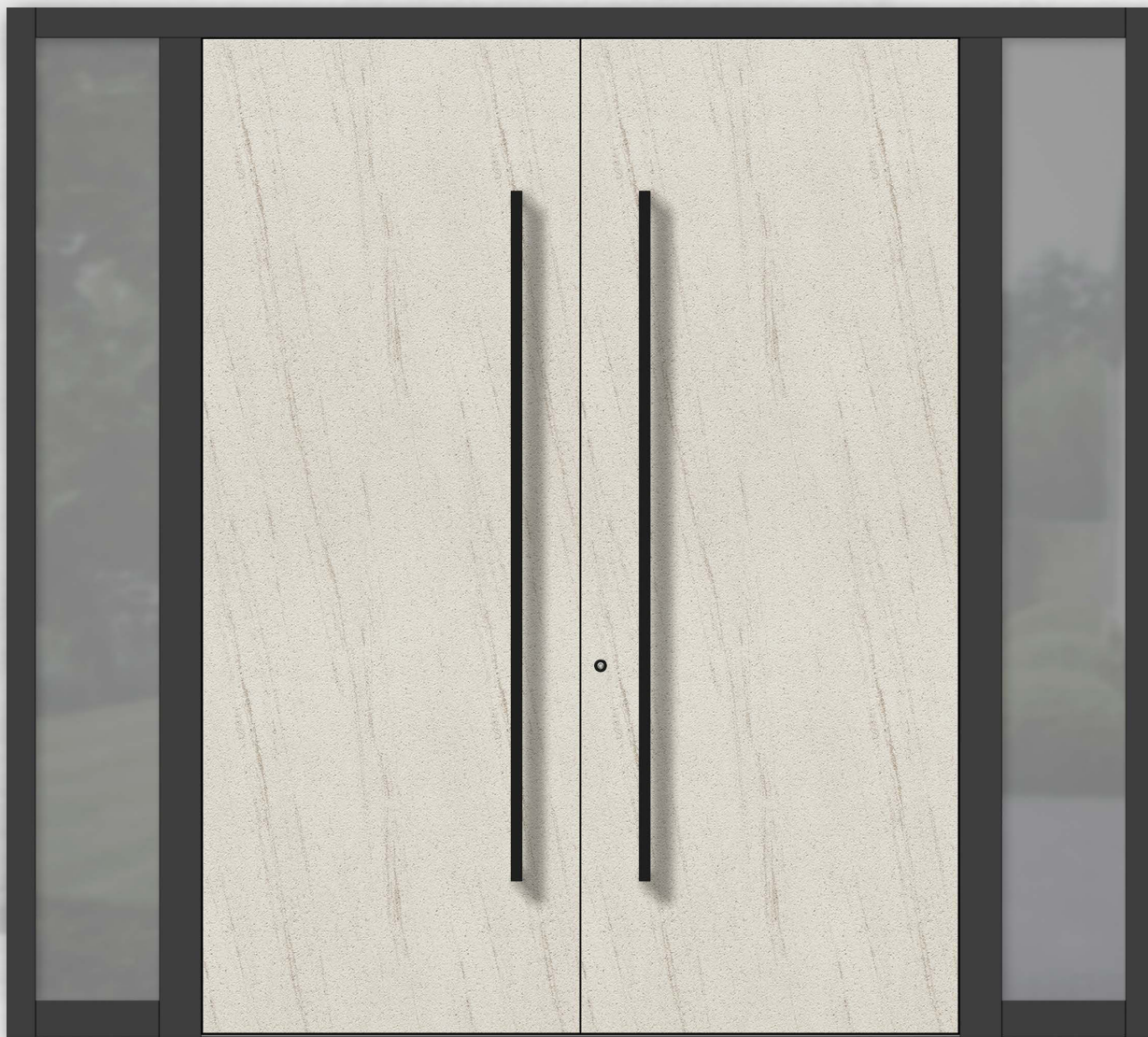
Frame and extension outside: Elite 0897

Pull handle: GFRS180 black

Rosette outside: SZAR black

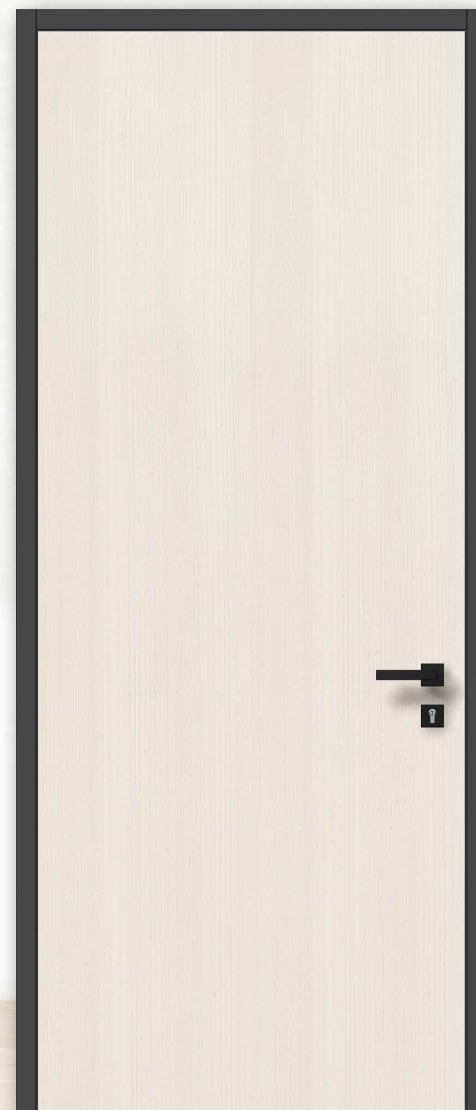
Side panel: ST06 Vision (narrow frame)

Glass: satinato white with black enamel edge, glued flush from the outside



#### HS901

Door leaf outside: Elite 0421  
 Frame outside: RAL7021  
 Pull handle: SQ180 black  
 Rosette outside: SZAR black  
 Double door with side panel ST01  
 Side panel glass: satinato white



#### HS901 view from the inside

Door leaf inside: spruce F10  
 Frame inside: RAL7021  
 Handle inside: S609 black





#### HS901

Door leaf outside: Elite 0894  
 Frame outside: Elite 0894  
 Pull handle: SQ180 black  
 Rosette outside: SZAR black  
 Side panel: ST03 with enamel glass  
 Glass side panel: parsol grey with black enamel



#### HS901

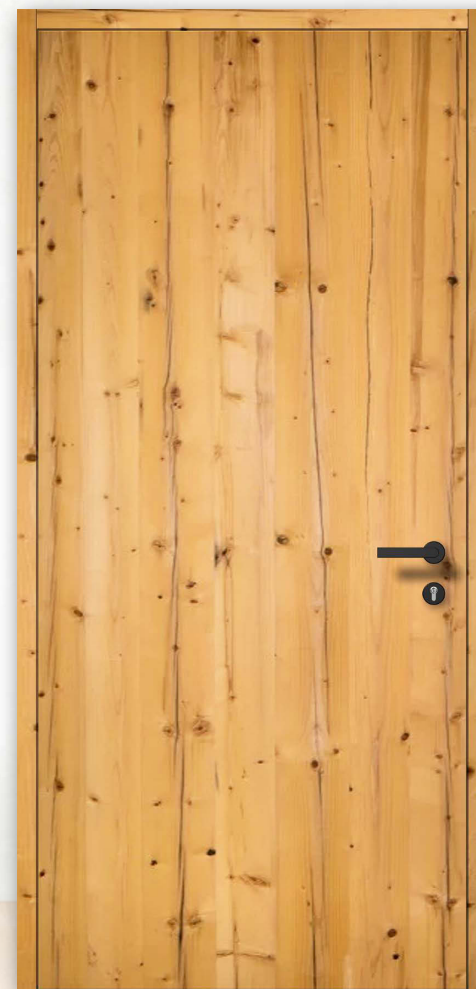
Door leaf outside: Vista 0223  
 Frame outside: Vista 0223  
 Pull handle: GFRS180 black  
 Rosette outside: SZAP black



#### HS952G

Door leaf outside: Vista 0224  
 Decor outside: black enamel glass  
 Frame outside: Vista 0224  
 Pull handle: GQ160 stainless steel  
 Rosette outside: ZAR stainless steel





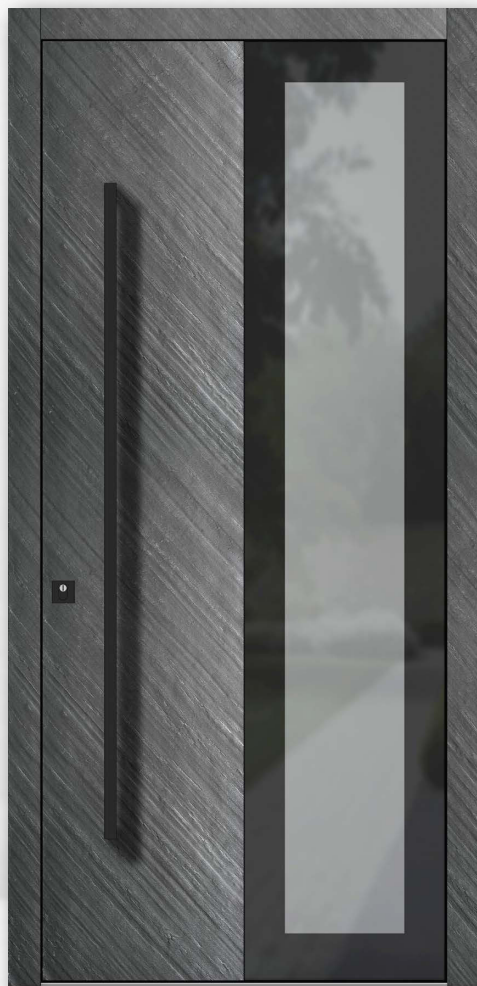
**HS901 view from the inside**

Door leaf inside: spruce, old wood look, oiled

Frame inside: spruce, old wood look, oiled

Handle inside: S608 black





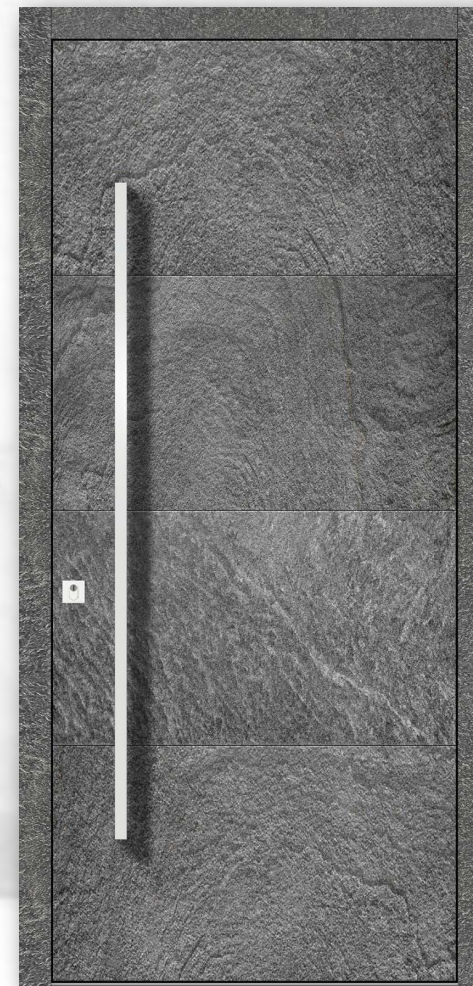
### HS955

Door leaf outside: Galaxy 02  
 Frame outside: Galaxy 02  
 Glass: parsol grey with black enamel  
 Pull handle: SQ160 black  
 Rosette outside: SZEP black



### HS953

Door leaf outside: Galaxy 05  
 Decor outside: parsol grey glass with black enamel  
 Frame outside: Galaxy 05  
 Pull handle: GVB180G black with enamel glass  
 Rosette outside: SZEP black



### HS902

Door leaf outside: Galaxy 06  
 Frame outside: Galaxy 06  
 Pull handle: GQ160 stainless steel  
 Rosette outside: ZEP stainless steel





**HS902 view from the inside**

Door leaf inside: oak E10

Frame inside: oak E10

Handle inside: GE509 stainless steel

Other: grooves also inside





#### HS954

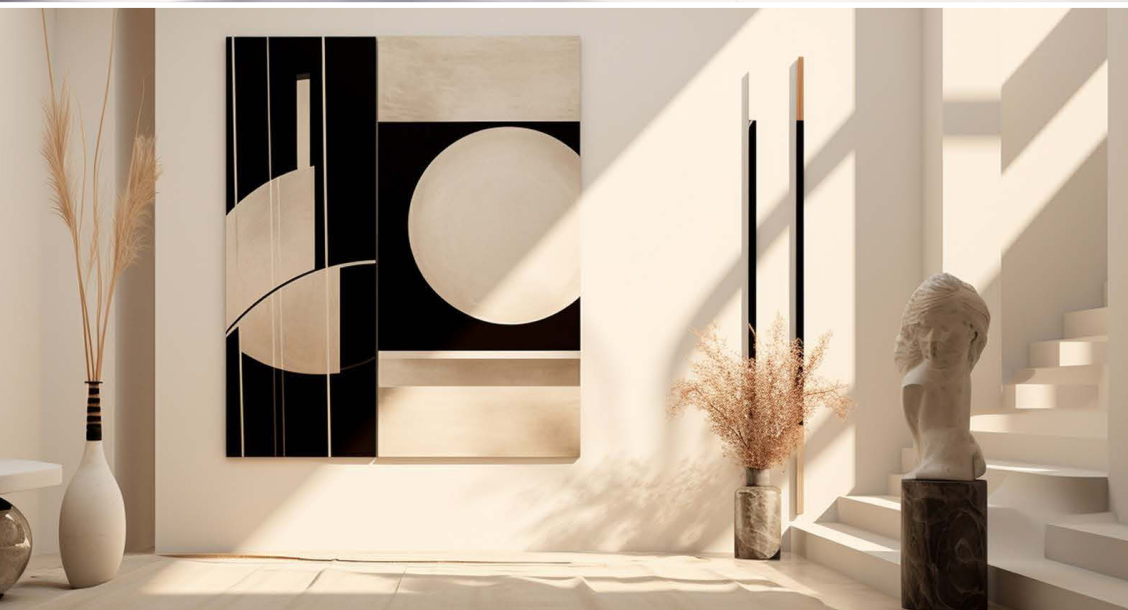
Door leaf outside: Galaxy 04  
 Frame outside: RAL9007  
 Glass: parsol grey with black enamel  
 Pull handle: GVE70G stainless steel with enamel glass  
 Rosette outside: ZAR stainless steel



#### HS952G

Door leaf outside: Galaxy 03  
 Decor outside: parsol grey glass with black enamel  
 Frame outside: RAL9007  
 Pull handle: GS200 stainless steel  
 Rosette outside: ZAR stainless steel  
 Side panel: ST03 with parsol grey glass with black enamel





**HS954 view from the inside**

Door leaf inside: maple F00

Frame inside: maple F00

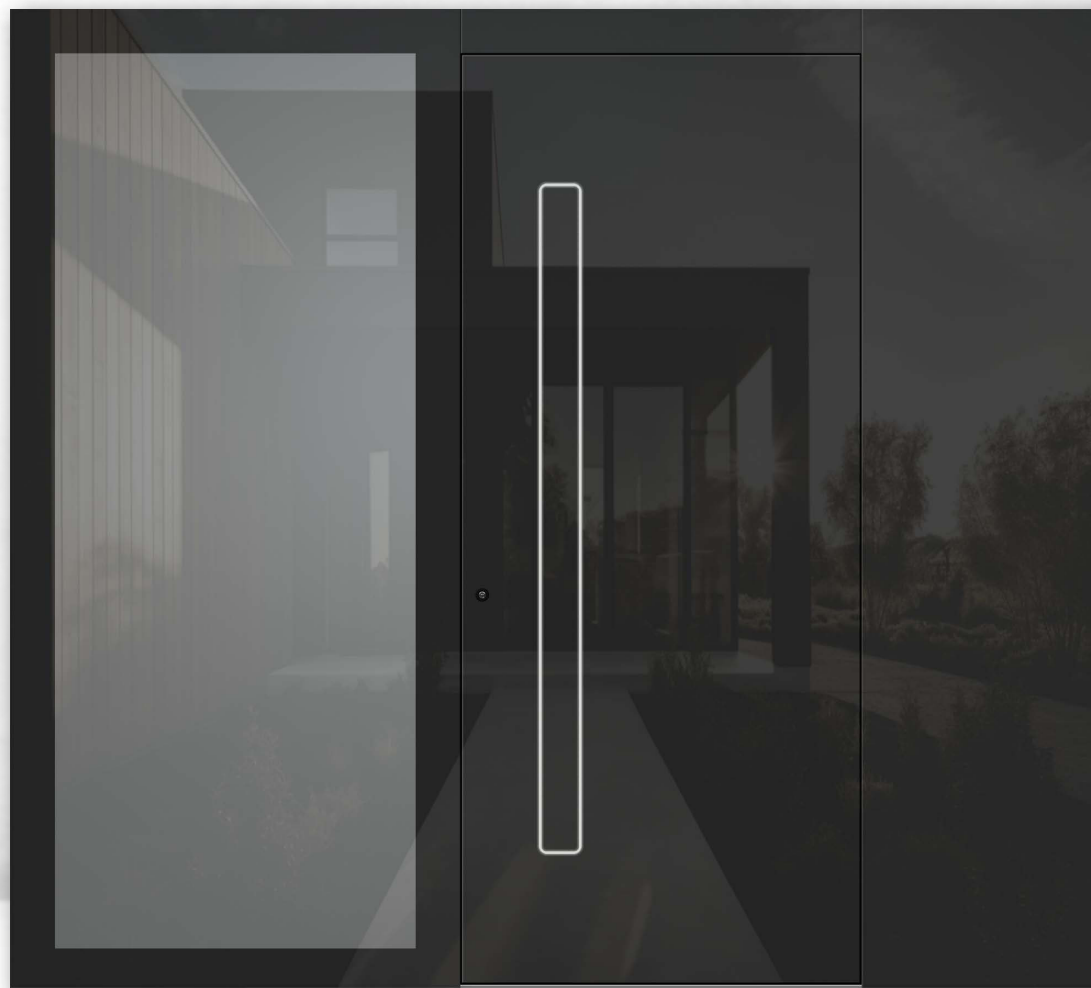
Handle inside: GE508 stainless steel





#### **HS956**

Door leaf outside: parsol grey glass with black enamel  
 Frame outside: parsol grey glass with black enamel  
 Handle: VK180 black with LED  
 Rosette outside: SZAR black



#### **HS901**

Door leaf outside: parsol grey glass with black enamel  
 Frame and extension outside: parsol grey glass with black enamel  
 Handle: SAG165 SmartActive with LED  
 Rosette outside: SZAR black  
 Side panel: ST07 with enamel glass  
 Glass side panel: parsol grey with black enamel





**HS956 view from the inside**

Door leaf inside: spruce F00

Frame inside: spruce F00

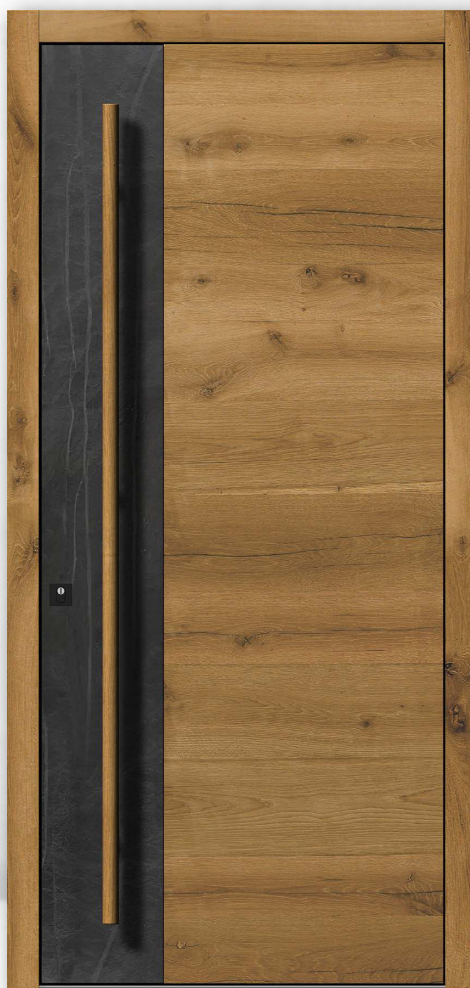
Handle inside: S608 black





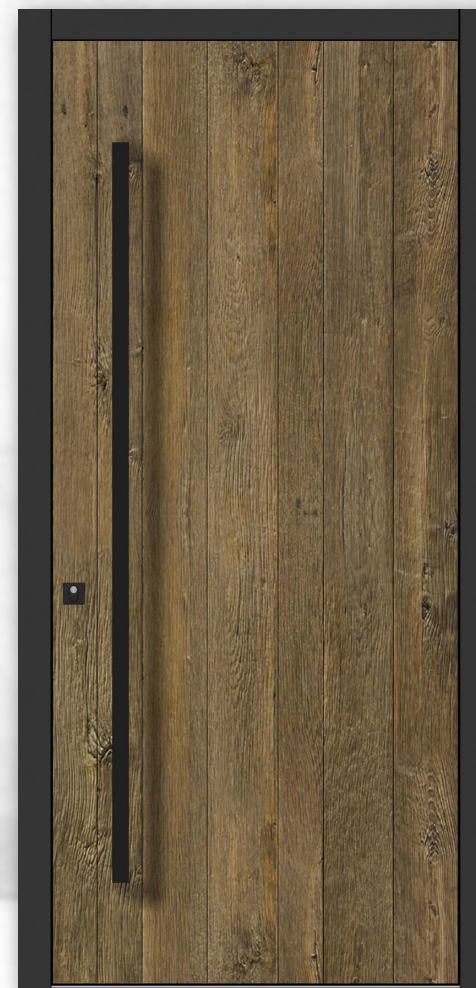
#### HS951

Door leaf outside: old wood spruce 3B crosswise  
 Decor outside: parsol grey with black enamel  
 Frame outside: old wood spruce 3B  
 Pull handle: GVB70H black with old spruce wood 3B  
 Rosette outside: SZAR black



#### HS952D

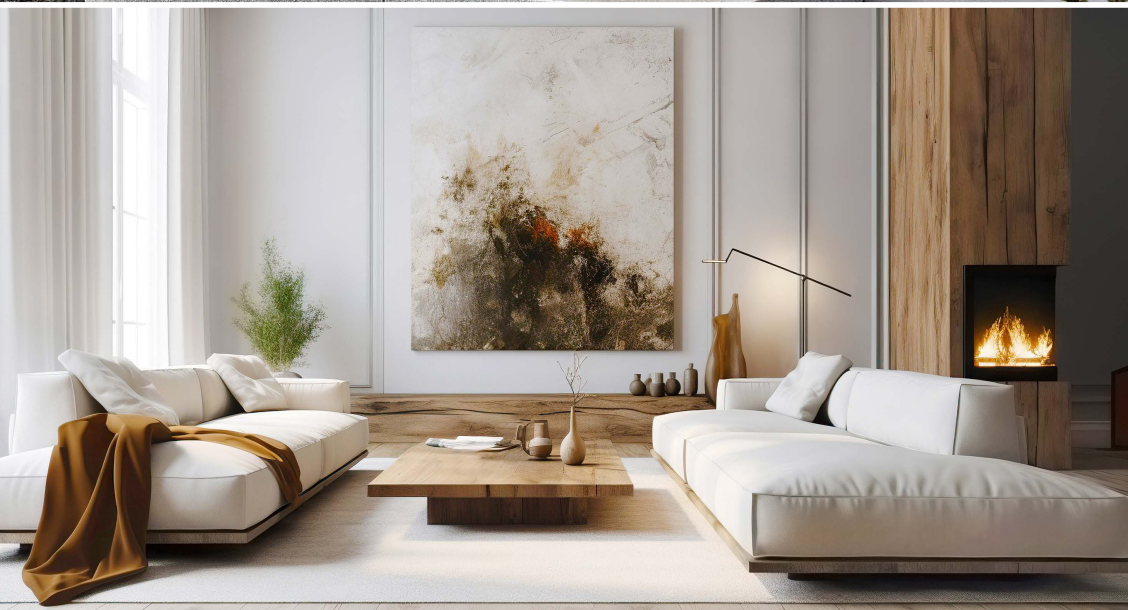
Door leaf outside: old wood oak 2E crosswise, oiled  
 Decor outside: Galaxy 01  
 Frame outside: old wood oak 2E, oiled  
 Push handle: HG2S200 oiled oak  
 Rosette outside: SZEP black



#### HS903

Door leaf outside: old wood oak 4E  
 Frame outside: RAL7021  
 Pull handle: GFRS180 black  
 Rosette outside: SZEP black





**HS952D view from the inside**

Door leaf inside: oak, old wood look, oiled

Frame inside: oak, old wood look, oiled

Handle inside: S608 black



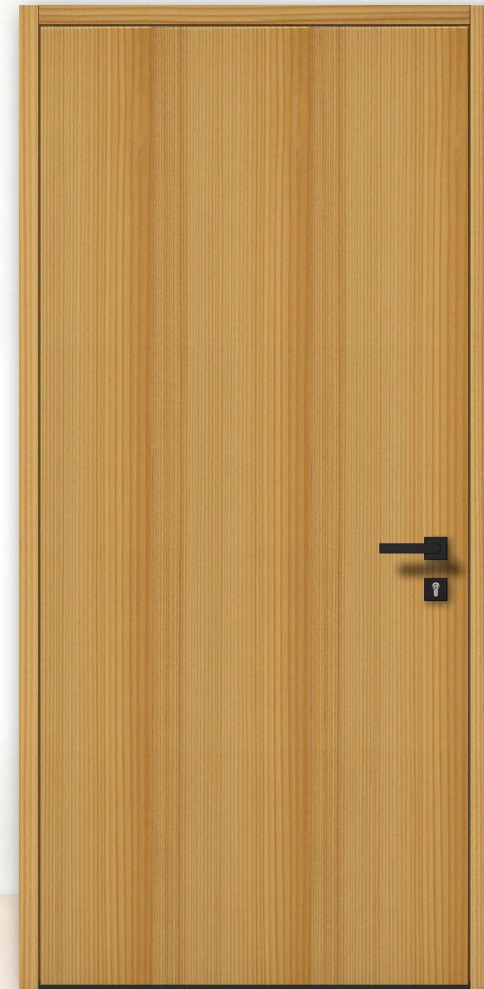


#### HS940

Door leaf outside: larch with wooden strips, oiled  
 Frame and widening outside: larch with wooden strips, oiled  
 Pull handle: HGS-TL larch oiled  
 Rosette outside: SZEP black  
 Side panel: ST01, larch wooden strips, oiled  
 Glass side panel: satinato white







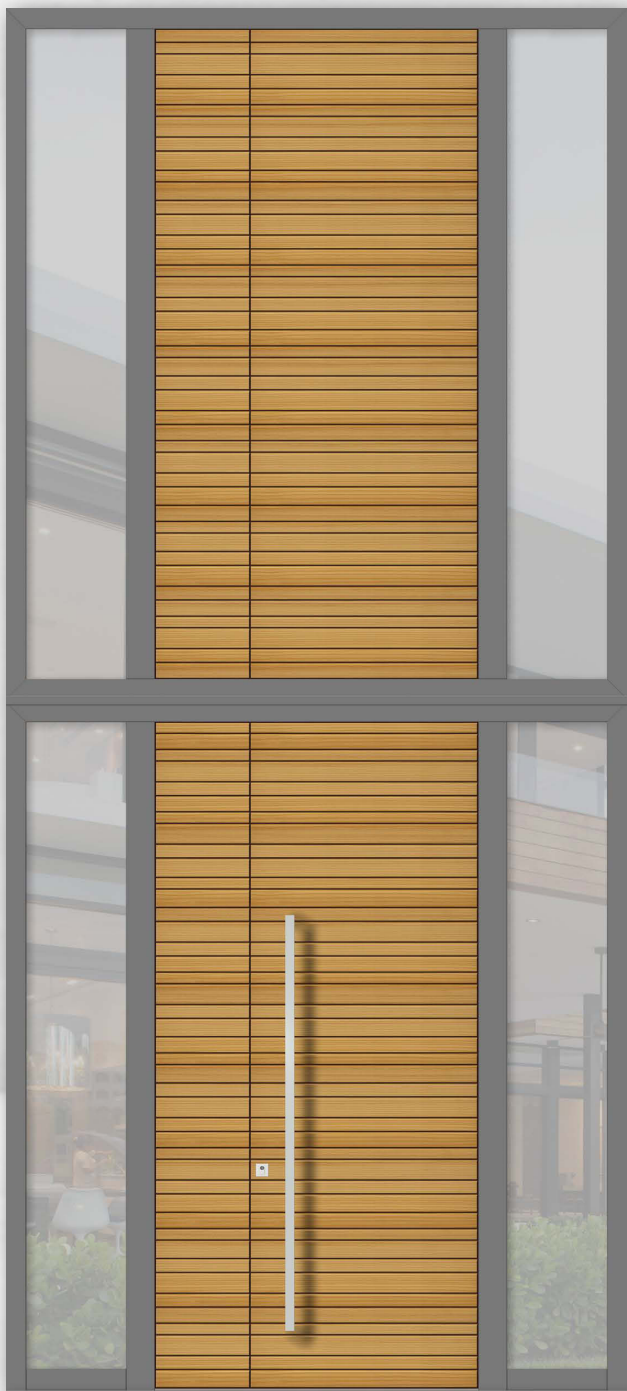
**HS940 view from the inside**

Door leaf inside: oiled larch

Frame inside: oiled larch

Handle inside: S609 black





#### HS901

Door leaf outside: Galaxy 01  
 Frame outside: aluminum RAL7021 FS  
 Handle: GVB180K black + Galaxy 01  
 Rosette outside: SZEP black  
 Lower side panel: ST04 with satinato glass  
 Galaxy 01 panel extension  
 Portal system at the top PS04

## WOOD/STONE

PORTAL SYSTEMS



6 M



#### HS941

Door leaf outside: larch with wooden strips, oiled  
 Door leaf with panel extensions  
 Outside frame: ALU RAL9007 FS  
 Pull handle: GFR180 stainless steel  
 Rosette outside: ZEP stainless steel  
 Lower side panel: ST04 with satinato glass  
 Portal system above PS04





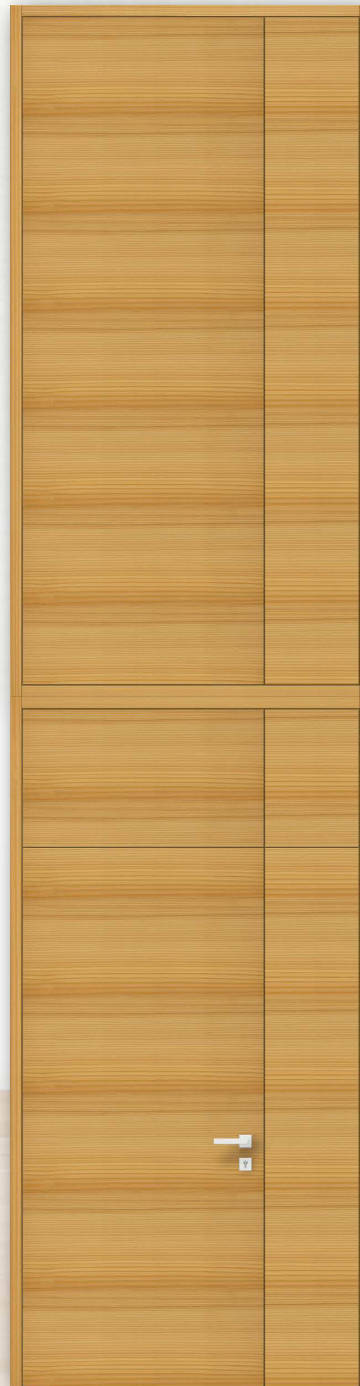


#### HS901 view from the inside

Door leaf inside: RAL9016  
Frame inside: RAL9016  
Handle inside: S609 black  
Panel extensions  
Portal system above PS04

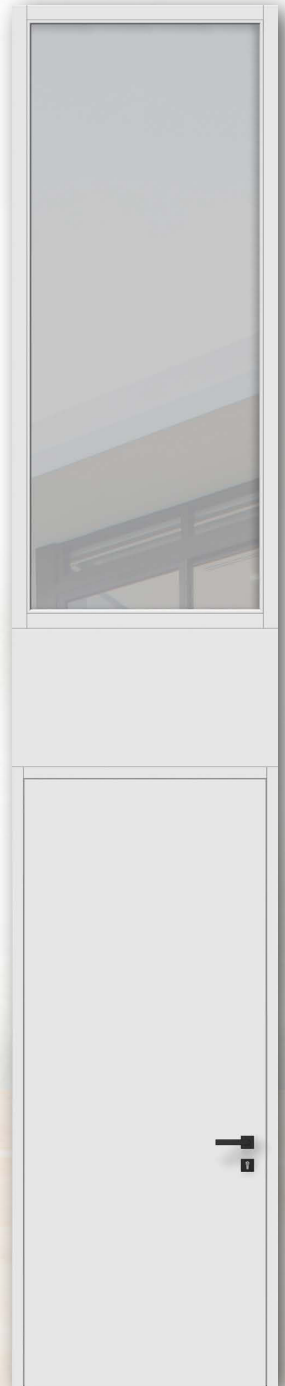
## WOOD/STONE

### PORTAL SYSTEMS



#### HS941 view from the inside

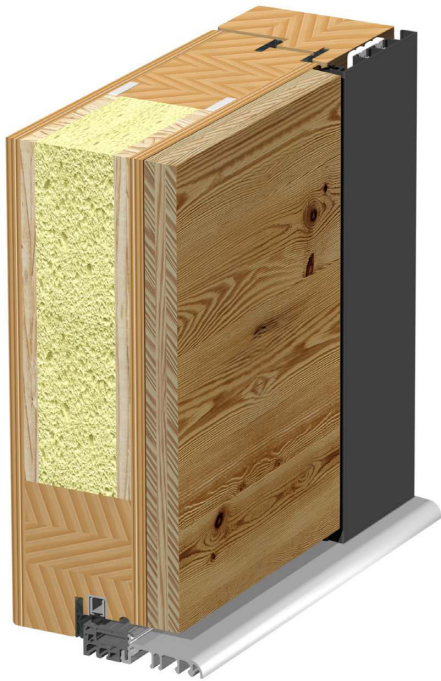
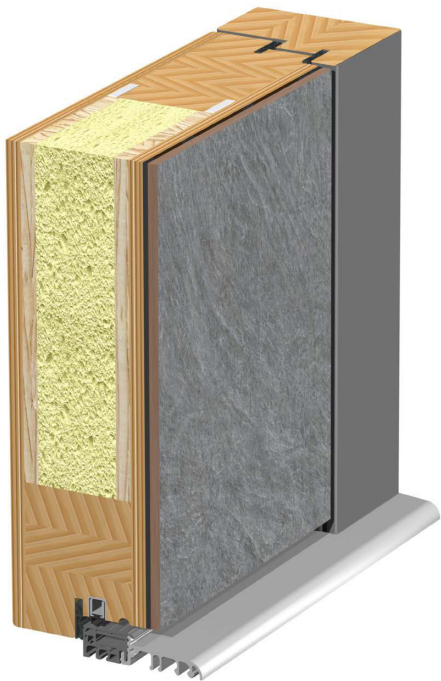
Door leaf inside: larch, oiled  
Frame inside: oiled larch  
Door leaf with panel extensions  
Handle inside: GE509 stainless steel  
Portal system above PS04





# EXCELLENT TECHNICAL FEATURES

- + flush on both sides
- + large selection of designs and combinations



	Standard version	Frame with aluminum profile	Frame with DESIGN panel
Frame thickness (construction depth)	from 90 mm	from 85 mm + aluminum profile	from 85 mm + design panel outside
Door leaf thickness	from 85 mm + design panel outside	from 85 mm + design panel outside	from 85 mm + design panel outside
Door leaf design	ISOCORE-TECH	ISOCORE-TECH	ISOCORE-TECH
Glazing	triple, Ug = 0.7 W/m²K	triple, Ug = 0.7 W/m²K	triple, Ug = 0.7 W/m²K
Sealing levels	2	3	2
Locking	3-point with hooks	3-poin with hooks	3-point with hooks
Hinges	concealed, 3D adjustable	concealed, 3D adjustable	concealed, 3D adjustable
Threshold	thermally separated TB75	thermally separated TB75	thermally separated TB75
Heat transfer coefficient Ud	from 0.8 W/m²K (spruce wood type)	from 0.8 W/m²K (spruce wood)	from 0.8 W/m²K (spruce wood)

## Standard equipment:

- wood types spruce, oak, larch
- ISOCORE-TECH door leaf blank - multi-layer construction, reinforced with solid wood frame, special cover layers and integrated reinforcement profile on the lock side, aluminum stabilization layers on both sides, PUR construction core, vertical veneer grain. Thermal transmittance coefficient of the blank UP = 0.96 W/m²K (wood type spruce).
- door leaf covered on the outside with various design panel surfaces (ceramic, stone, laminate, old wood, concrete look, enamel glass...)
- frame on the outside made of wood (opaque varnish) or with aluminum profile or covered with various design panel surfaces (ceramic, stone, laminate, old wood, concrete look, enamel glass...)





## LIMITLESS MATERIAL SELECTION AND COMBINATIONS

We value the work of human hands, which is derived from passion and the tradition of several generations. Our latest wood/stone collection offers a **unique combination** of high-quality materials such as wood, reclaimed wood, ceramic, stone, laminate and black enameled glass that transform your entrance doors into elegant works of art.

With our **ceramic panels** you can achieve a modern yet timeless look. The smooth or rough surface and the variety of colors and patterns allow you to emphasize your individual style.

Our **stone panels** give your door a robust and natural aesthetic. From classic marble to rustic slate, we offer a wide range of stone options that add character to any entrance.

For an easy-care yet stylish option, our **laminate panels** are ideal. They offer high resistance to scratches and stains.

Our **old wood panels** give your door a rustic and authentic charm. Each piece of wood tells its own story and brings a natural warmth to your home.

A high-quality selection of additional features allows you to have your own front door made to measure as a unique piece using various material combinations. Discover the variety of our new collection and give your door a new, impressive look.

### Impressive new surfaces





## DESIGN SURFACES (exterior)

### ROYAL ceramics



**ROYAL 01** Bianco Venato  
*smooth matte*



**ROYAL 02** Pietra Grey  
*smooth matte*



**ROYAL 03** Nero Greco  
*smooth matte*



**ROYAL 04** Noir Desir  
*smooth matte*



**ROYAL 05** Porfido Marrone  
*matt structure*



**ROYAL 06** Ossido Nero  
*smooth matte*



### ROYAL ceramic surfaces

ROYAL ceramic surfaces naturally offer countless advantages that make them the perfect choice for designing your home. Presented are natural surfaces of the highest quality.

- + easy to clean and maintain
- + not afraid of scratches and scrapes
- + resistant to high temperatures
- + resistant to frost and low temperatures
- + does not absorb water and is not afraid of moisture
- + sustainable and recyclable
- + resistant to weather influences and UV rays

Note: ROYAL ceramic surfaces can only be used on the outside of the door.  
The decorative structure can only run as shown.

The colors are only shown symbolically! Color deviations from the original are possible due to printing conditions! Please match your color with a valid color chart!





**ELITE 0421** Venus  
matt structure



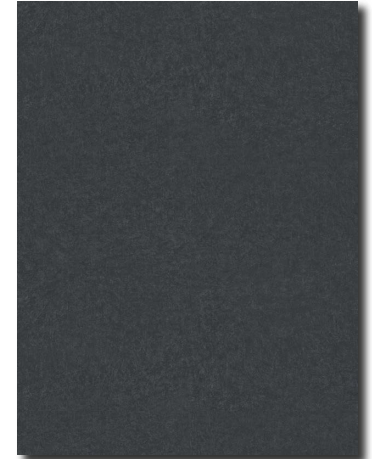
**ELITE 0897** Grey Slate  
matt structure



**ELITE 0898** Nero Slate  
matt structure



**ELITE 0894** Concrete  
matt structure



**ELITE 0799** Blackjack  
matt structure

## ELITE laminate surfaces

Convincing depth effect and pleasant feel!  
ELITE laminate structure is lively, raw and natural and rounds off the surface spectrum in an exciting way.

- + easy to clean and maintain
- + highly weather-resistant
- + impact-resistant
- + scratch-resistant
- + unique structure
- + solvent-resistant
- + durable
- + permanently closed surface

Note: the laminate panels are duromers high pressure laminates (HPL) according to EN 438-6. The ELITE laminate surfaces can only be used on the outside of the door.  
The decorative structure can only run as shown.



**ELITE 0794** Patina Bronze  
matt structure

*The colors are only shown symbolically! Color deviations from the original are possible due to printing conditions! Please match your color with a valid color chart!*



## DESIGN SURFACES (exterior)

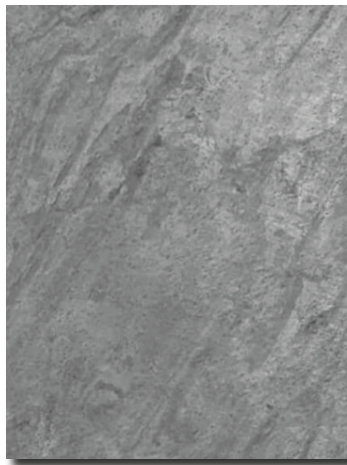
### **GALAXY** stone-look



**GALAXY 01** Terra Noir  
*colored slate with structure*



**GALAXY 02** Ventura Black  
*mica schist with structure*



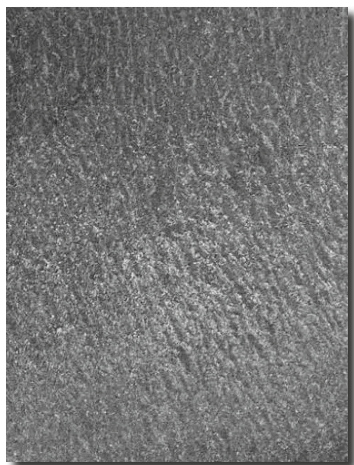
**GALAXY 03** Silver Grey  
*mica schist with structure*



**GALAXY 04** Dark Creek  
*marble with structure*



**GALAXY 05** Monsoon Black  
*marble with structure*



**GALAXY 06** Aurora Black  
*mica schist with structure*



### **GALAXY** stone-look surfaces

Galaxy surfaces are innovative, wafer-thin natural stone layers with the feel and appearance of a solid stone slab.

- + UV-resistant and frost-proof. All Galaxy decors are frost-proof and UV-resistant and are suitable for outdoor use without any problems.
- + more robust than raw stone slabs. Thanks to the fiberglass base, the Galaxy decors are more robust than conventional, thick raw stone slabs.
- + water-resistant & easy to maintain. All decors have a very high water resistance and can be cleaned with clear water.

All decors are additionally protected with special impregnation.

Note: the GALAXY stone look surfaces can only be used on the outside of the door. The decorative structure can only run as shown. The decors impress with their rough surface with different and constantly changing patterns and structures. Strong grain and elevations in the surface are typical features.

The colors are only shown symbolically! Color deviations from the original are possible due to printing conditions! Please match your color with a valid color chart!

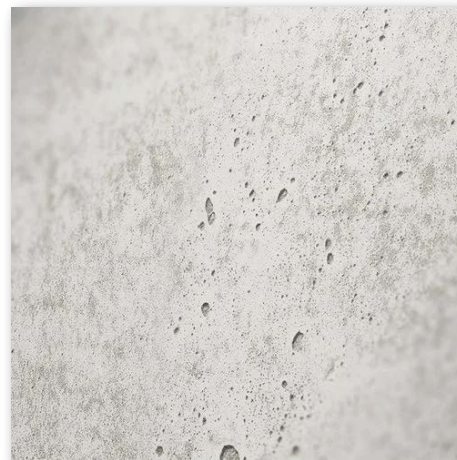




### VISTA concrete-look



**VISTA 0223** Vintage light  
*with structure*



**VISTA 0224** Vintage standard  
*with structure*



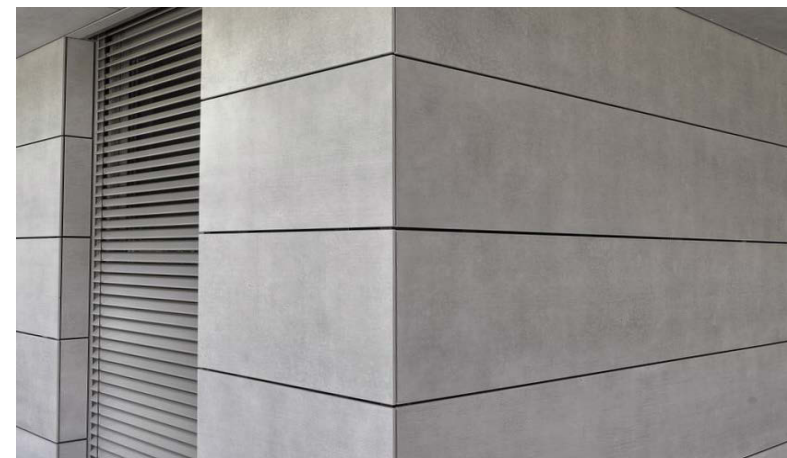
**VISTA 0226** Vintage anthracite  
*with structure*

### VISTA concrete-look surfaces

VISTA concrete look and feel with air bubble holes.  
With concrete look surfaces you can give your front doors a modern industrial design in a light way.

- + original feel and appearance with three-dimensional depth structure
- + weather-resistant
- + extremely robust
- + resistant to stains and abrasion
- + durable coating with very good processing properties
- + non-flammable

Note: the VISTA concrete look surfaces can only be used on the outside of the door.  
The decorative structure can only run as shown.

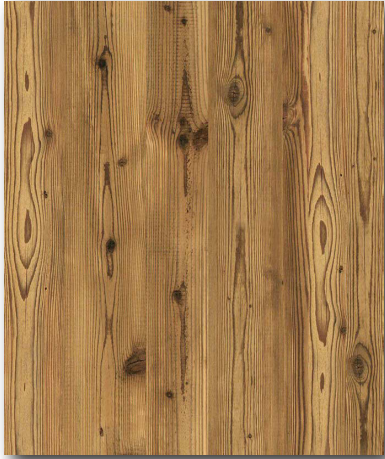


*The colors are only shown symbolically! Color deviations from the original are possible due to printing conditions! Please match your color with a valid color chart!*



## DESIGN SURFACES (exterior)

### VINTAGE old wood



**Spruce 3B**  
raw, untreated



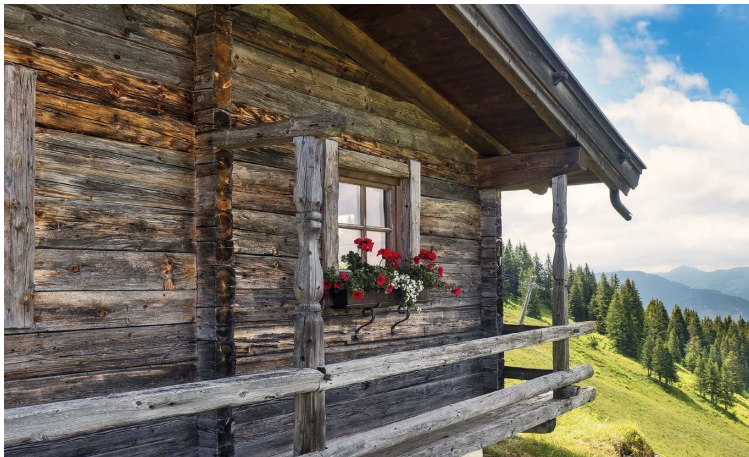
**Spruce 5C**  
raw, untreated



**Oak 2E**  
oiled



**Oak 4E**  
raw, untreated



### VINTAGE old wood surfaces

Behind every beam and every board lies a long and special story. Whether shaped by the sun for decades, felled by hand centuries ago or marked by wind and rain, all woods are unique in their shape, structure and color. The elegant appearance makes the door an unmistakable one-of-a-kind piece of furniture.

#### Notes:

Solid old wood surfaces type 3B, 5C and 4E are not treated with any wood preservative. Old wood is old wood that has acquired its beautiful patina through the influence of natural weathering processes, which can be seen through cracks in the wood, brushed and chopped surfaces, patched areas, branches, worm bites and insect holes.

Old wood surfaces must not be exposed to direct weathering. Any changes to old wood surfaces or delamination of the three-layer board represent a natural process of aging of unprotected wood and are not grounds for complaint unless they affect the functionality of the door.

The VINTAGE old wood surfaces can only be used on the outside of the door!  
The wood structure can run horizontal or vertical.

*The colors are only shown symbolically! Color deviations from the original are possible due to printing conditions! Please match your color with a valid color chart!*



## VETRO enamel glass



**Parsol grey or clear glass**  
black enamel  
example without light cutout



**Parsol grey**  
black enamel  
example with light cutout



**Dark grey**  
black enamel  
example with light cutout



**Clear glass**  
black enamel  
example with light cutout

## VETRO enamel glass surfaces

With the help of glass, very special effects can be achieved in the room. It is the material of the modern age and is used in the construction of modern houses.

The black enamelled glass on the front doors gives the house an elegant and modern touch. It fits seamlessly into the overall design and gives the entrance area an appealing look. The shiny surface of the enamelled glass reflects the light and creates an inviting atmosphere.

Note: The VETRO enamel glass surfaces can only be used on the outside of the door.



*The colors are only shown symbolically! Color deviations from the original are possible due to printing conditions! Please match your color with a valid color chart!*



DESIGN SURFACES (exterior)

Aluminum surfaces



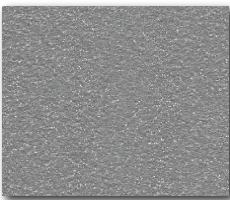
**approx. RAL9006**  
smooth



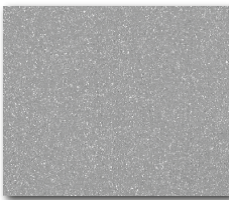
**approx. RAL9007**  
smooth



**approx. RAL9006 FS**  
fine structure



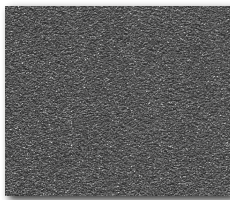
**approx. RAL9007 FS**  
fine structure



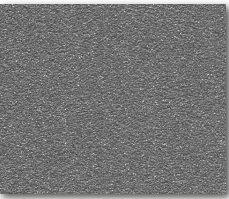
**ANTICO GRAU**  
smooth



**approx. DB703**  
smooth



**approx. DB703 FS**  
fine structure



**Sparkling Iron**  
fine structure



**DM02**  
fine structure



**DM03**  
fine structure



**HFM22**  
fine structure



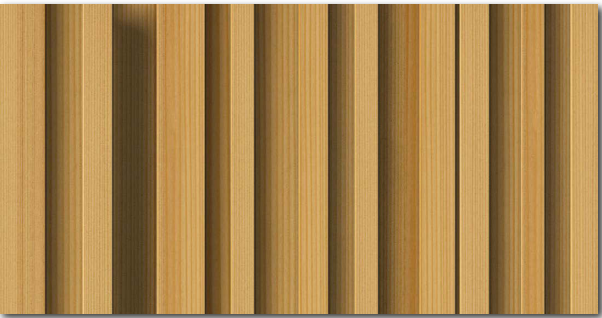
**Quarz 2**  
fine structure



Other colors from the RAL-CLASSIC  
color chart available!

Note: The aluminum surfaces can only be used on the outside of the door!

Wooden strip surfaces



**Wooden strips 3D look, VERTICAL**  
different or equal strip widths



**Wooden strips 3D look, HORIZONTAL**  
different or equal strip widths

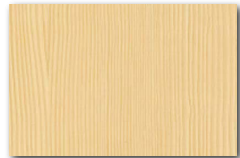
Note: The wooden strip finishes can only be used on the outside of the door!  
The colors are only shown symbolically! Color deviations from the original are possible due to printing conditions! Please match your color with a valid color chart!







## Aquawood Protor-Finish 2-K paint system



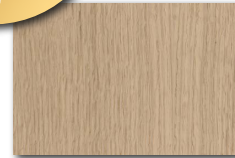
spruce **F00**  
clear glaze



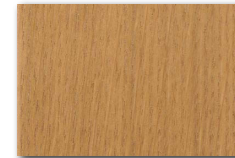
spruce **F10**  
antique white



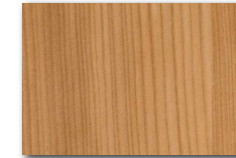
oak **E00**  
clear glaze



oak **E10**  
natural effect



oak **OILED**  
colorless



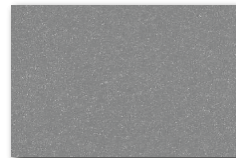
larch **L00**  
clear glaze



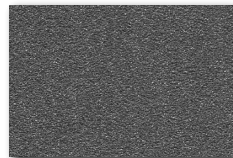
larch **OILED**  
colorless



**RAL9006**  
metallic



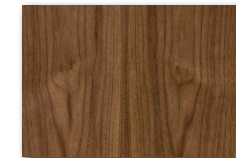
**RAL9007**  
metallic



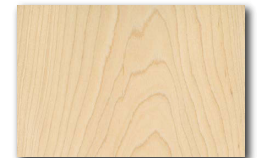
ca. **DB703**  
metallic



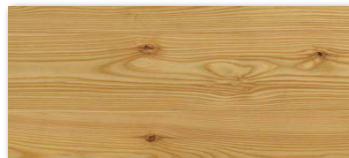
Other colors from the RAL-CLASSIC  
color chart available!



american **walnut**  
clear glaze  
base wood oak



**maple**  
clear glaze  
base wood spruce



larch **knotty**  
colorless oiled



oak **knotty**  
colorless oiled



oak **knotty**  
grey oiled



oak **knotty**  
dark brown oiled



oak **old wood-look**  
colorless oiled



### IMPORTANT NOTES!

The arrangement, size and quantity of the branches and cracks in the wood is arbitrary and different for each front door (unique) and therefore does not constitute a reason for complaint. The wood grain runs either lengthways or crossways, any deviations from the vertical or horizontal direction are not grounds for complaint!



spruce **old wood-look**  
colorless oiled

The colors are only shown symbolically! Color deviations from the original are possible due to printing conditions! Please match your color with a valid color chart!



# The upgrade for your entrance door

## EAV4+ smart-lock

Your smartphone as a key

Open the front door via Bluetooth® or remotely via WLAN



## EAV4+ smart-lock

The smart generation of motorized automatic multi-point locking systems EAV4+ locks your front door almost by itself – automatically when you leave the house.

### Open the front door via smartphone!

The "+" on the EAV4+ lock stands for a built-in radio module. This allows the door to be conveniently unlocked using the Winkhaus doorControl app. This turns your smartphone into a door opener. This can be done from close proximity via Bluetooth® or remotely via WLAN.

Additional installations, control modules or external access control systems are not required. Of course, you can also operate the EAV4+ lock with a mechanical key or using the door handle from the inside. The EAV4+ lock is also equipped with the practical day latch.

## EAV4 locking

### Motorized automatic multi-point locking system EAV4

Locks your entrance door almost by itself - automatically when you leave the house.

Unlocking is done via a motor - it pulls back the massive swivel bolts with the sealing elements and lets you in. EAV4 is compatible with all common access control systems that transmit a potential-free opening signal to the lock. Whether it is a finger scanner, code keypad, intercom or simply a button - EAV4 unlocks at your command.

A holiday lockout function ensures even more security while you are away. Of course, you can also operate the EAV4 lock with a mechanical key or using the door handle from the inside. The EAV4 lock is also equipped with the practical day latch.



### Finger scanner FS2

Stainless steel or black  
Digital control  
*Mounted on the door leaf  
or pull handle*



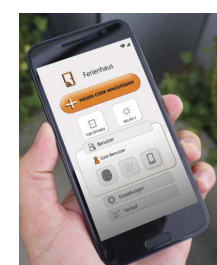
### Keypad CT2

Stainless steel or black  
Analog control  
Capacity 100 codes  
*Mounted on the door leaf*



### Finger scanner & keypad FSCT

Stainless steel or black  
Remote control with app (smartphone)  
*Mounted on the door leaf or pull handle*



### Advantages of the FS2 finger scanner

- + digital control (programming) with app via smartphone
- + fingerprint capacity: 166
- + number of administrators: unlimited
- + access log
- + access schedule for users
- + daily unlocking
- + control for external LED
- + unlocking via app via Bluetooth
  - within local range of the door
  - function also possible with Keypad CT2

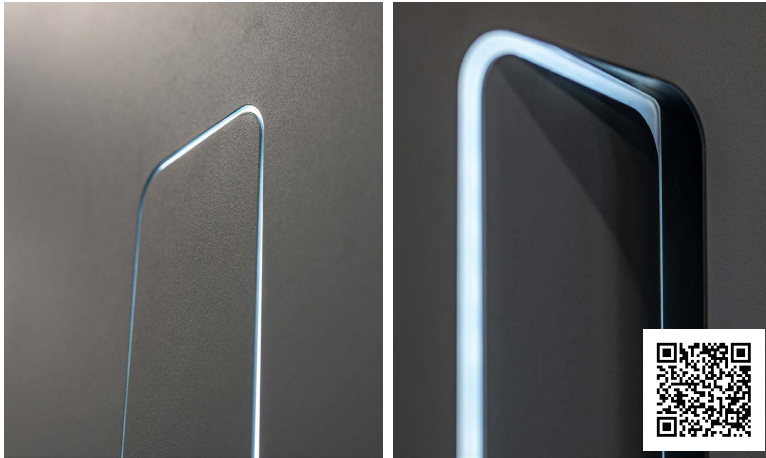
### Advantages FSCT

- + Remote control (programming) via GSM/LTE or home WiFi
- + remote opening of the door with app
- + adding and deleting users and codes remotely (useful for managing access to holiday accommodation)
- + all other functions the same as FS2 and also accessible remotely
- + simultaneous analog and app control
- + no user registration is required to log in to the app

**Note:** for FS2 and CT2 remote control on request



## ACCESSORIES - pull handles and door handle sets



### SmartActive shell handle - SAG

The shell handle is electronically controlled by a motor and a built-in spring, which offers an automatic opening and closing option. Combination only possible with EAV4 locking & access control system (scanner or keypad) or with EAV4+ (app.) locking! Completely flush including LED lighting, width 105 mm.

Possible lengths:

**SAG40** (395 mm) / **SAG85** (855 mm) / **SAG125** (1255 mm) / **SAG165** (1655 mm)



### Pull handle VARIO - GV

Profile width 58 mm, color stainless steel or matt black  
Decorative insert above:

- black enamel glass (standard)

- design surface (Royal/Elite/Galaxy/Vista/Vintage)

Optionally with finger scanner, keypad or LED lighting.

Possible lengths: 700 mm horizontal /  
800 mm / 1200 mm / 1600 mm / 1800 mm / 2000 mm



### Pull handle - GFR / GFRS

Semi-circular profile  
40 x 20 mm

Color stainless steel or matt black

Optionally with finger scanner, keypad or LED lighting.

Possible lengths:

800 mm / 1200 mm / 1600 mm / 1800 mm / 2000 mm

### Pull handle - GQ / SQ

Square profile 30x30 mm



### Brass pull handle - GB / GM

Profile round, 30 mm

Color matt bronze, matt brass

Possible lengths:

1200 mm / 1600 mm / 1800 mm



### Wooden pull handle - HG2

Profile round, 40 mm

Handle bar oiled oak,  
base stainless steel or black,  
length of your choice



### Shell handle - VK

Color black or like  
door leaf, optionally with  
LED lighting  
Length of your choice



**GE504** stainless steel  
**S604** matte black  
**B704** matt bronze



**GE508** stainless steel  
**S608** matt bronze



**GE509** stainless steel  
**S609** matt bronze



**GE540** stainless steel  
**S640** matt bronze



**Cylinder rosette**  
**ZAR** stainless steel  
**SZAR** matt bronze  
**MZAR** matt brass



**Security rosette**  
**PLANO**  
**ZAP** stainless steel  
**SZAP** matt bronze



**Security rosette**  
**PLANO**  
**ZEP** stainless steel  
**SZEP** matt bronze



**Security rosette**  
**ZA** stainless steel  
**SZA** Smatt bronze  
**BZA** matt bronze  
**MZA** matt brass





## **WOOD/STONE FRONT DOORS**

All front door models are protected by copyright.

Technical changes, errors and misprints reserved!

Color deviations from the original are possible due to printing conditions. This catalog shows single-leaf front doors measuring 1150 x 2400 mm.



## **WOOD/STONE FRONT DOORS**

Technical changes, errors and misprints reserved!

© DOORS, Issue 1/2025